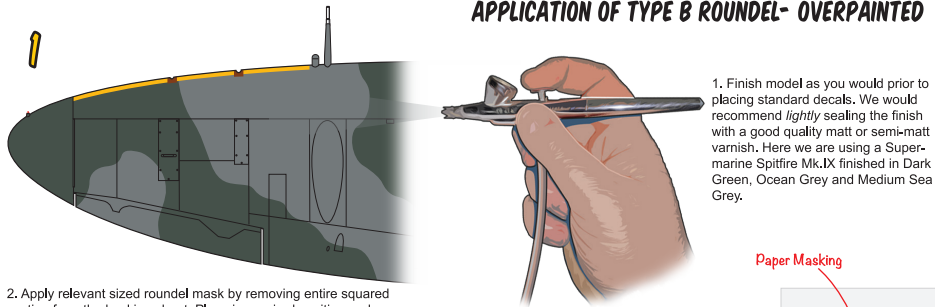
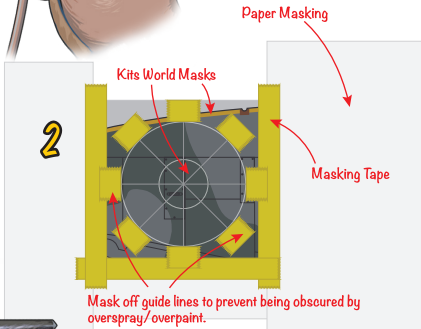


APPLICATION OF TYPE B ROUNDEL- OVERPAINTED



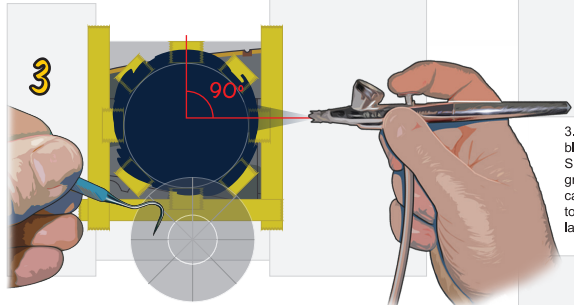
1. Finish model as you would prior to placing standard decals. We would recommend *lightly* sealing the finish with a good quality matt or semi-matt varnish. Here we are using a Supermarine Spitfire Mk.IX finished in Dark Green, Ocean Grey and Medium Sea Grey.

2. Apply relevant sized roundel mask by removing entire squared section from the backing sheet. Place in required position and mask off with tape and paper. You will notice that we have included guide lines (shown in light grey here for clarity). These are so you can more easily reposition and line up the mask when covering the blue section of the roundel prior to spraying the red. Cover the guides outside the blue area with small pieces of masking tape. This is so that paint overspray will not obscure the guides when the sections need to be realigned. Low-tack tape is recommended to avoid damaging the masks. Tamiya tape is ideal.



2

Mask off guide lines to prevent being obscured by overspray/overpaint.

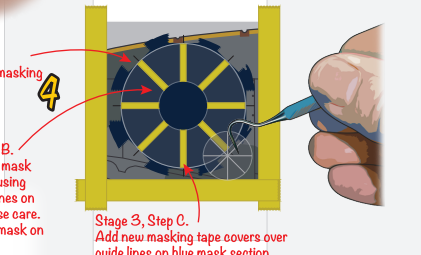


3. Using a toothpick, scalpel or pick, carefully remove both the blue and red sections of the mask and replace on backing sheet. Spray (or brush apply) the relevant colour, building the paint up gradually. Ideally, spray at a 90° angle to the model surface. Be careful not to build the paint up too thickly as the roundel needs to be flush with the surface. It may be advisable to apply a *thin* layer of matt white to 'deadener' out the underlying colours.

4. A) Remove the small pieces of masking tape that you applied to cover the ends of the guides. B) Carefully replace the blue section making sure to align the guides properly. This is the trickiest part of the process to ensure that the sections are all 'centred'. Leave the red centre section on the backing sheet. C) Place thin strips of masking tape over the guide lines to protect them from overpainting, and to allow the mask to be used again.

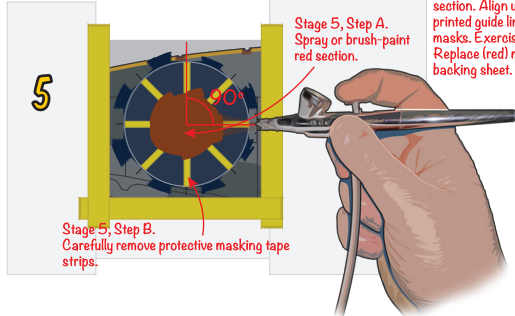
Stage 4, Step A. Remove original masking tape covers.

Stage 4, Step B. Replace (blue) mask section. Align using printed guide lines on masks. Exercise care. Replace (red) mask on backing sheet.



4

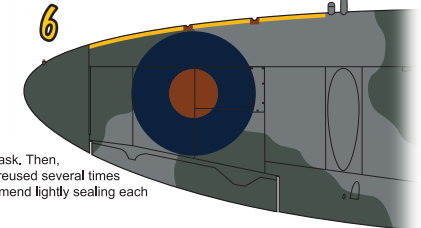
Stage 3, Step C. Add new masking tape covers over guide lines on blue mask section.



Stage 5, Step B. Carefully remove protective masking tape strips.

5. A) Again, spraying at a 90° angle to the model surface, lightly build up the red section. Brush application is also perfectly adequate. As before, build the paint up in thin layers to avoid the sections sitting proud of the surface. B) Once dry, carefully remove the protective masking tape strips.

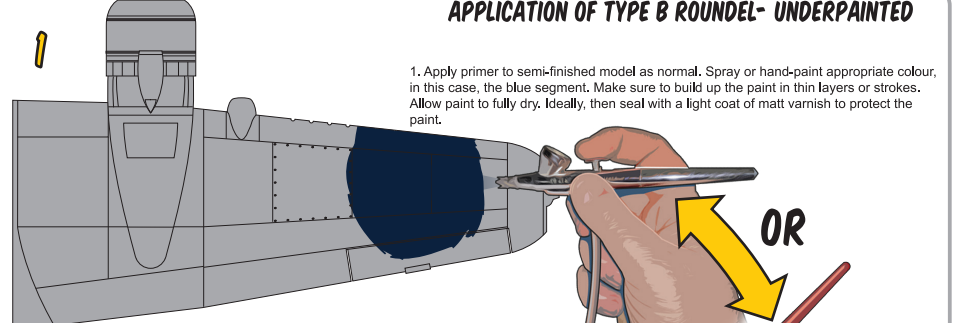
6



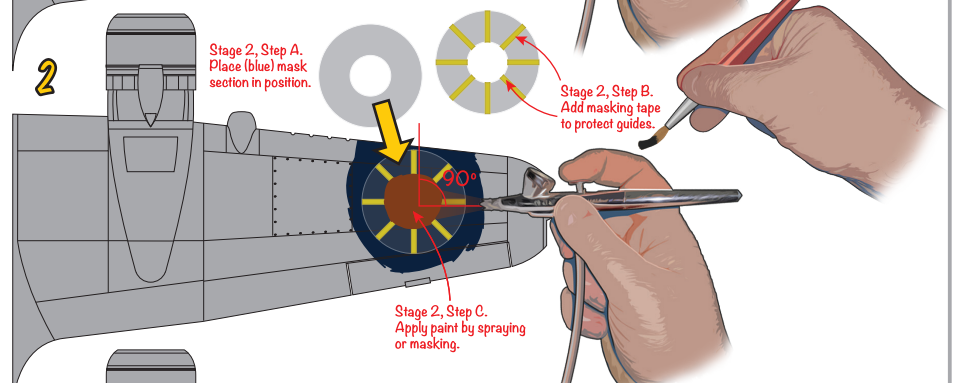
6. Carefully remove the paper masks and masking tape seal to avoid damaging the mask. Then, remove the mask and replace on the backing paper for use again. Our masks can be reused several times if care in handling is observed at all times. To protect your hard work, we would recommend lightly sealing each marking as it is finished with good quality modelling varnish.

It goes without saying, but we would advise that you have some experience of applying markings with masks. Although a trickier option than using standard decals, masking can give a much greater degree of flexibility and also realism especially when a specific standard of weathering or fading needs to be achieved.

APPLICATION OF TYPE B ROUNDEL- UNDERPAINTED



1. Apply primer to semi-finished model as normal. Spray or hand-paint appropriate colour, in this case, the blue segment. Make sure to build up the paint in thin layers or strokes. Allow paint to fully dry. Ideally, then seal with a light coat of matt varnish to protect the paint.

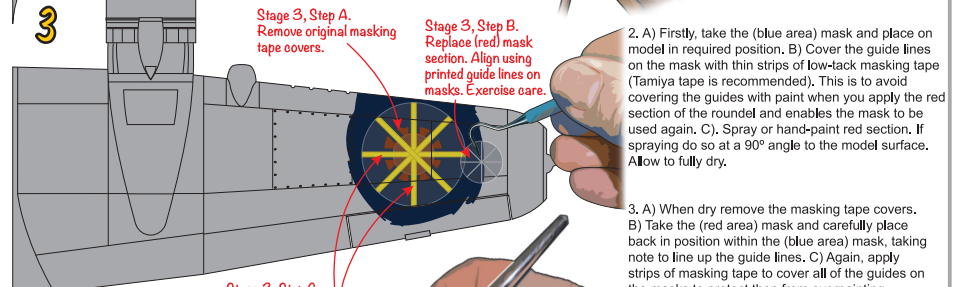


2

Stage 2, Step A. Place (blue) mask section in position.

Stage 2, Step B. Add masking tape to protect guides.

Stage 2, Step C. Apply paint by spraying or masking.

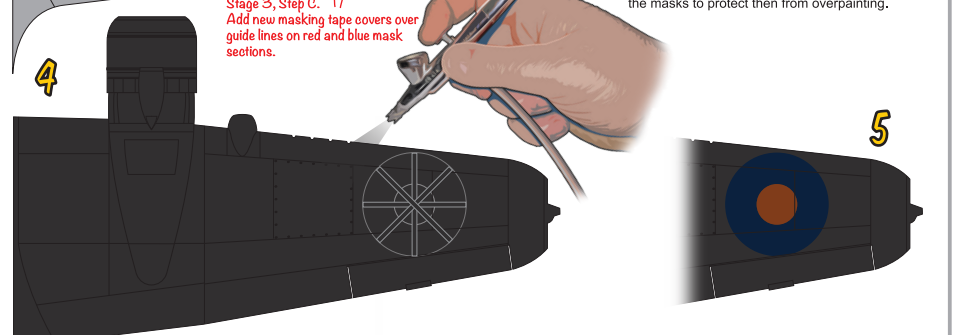


3

Stage 3, Step A. Remove original masking tape covers.

Stage 3, Step B. Replace (red) mask section. Align using printed guide lines on masks. Exercise care.

2. A) Firstly, take the (blue area) mask and place on model in required position. B) Cover the guide lines on the mask with thin strips of low-tack masking tape (Tamiya tape is recommended). This is to avoid covering the guides with paint when you apply the red section of the roundel and enables the mask to be used again. C), Spray or hand-paint red section. If spraying do so at a 90° angle to the model surface. Allow to fully dry.



4

Stage 3, Step C. Add new masking tape covers over guide lines on red and blue mask sections.

3. A) When dry remove the masking tape covers. B) Take the (red area) mask and carefully place back in position within the (blue area) mask, taking note to line up the guide lines. C) Again, apply strips of masking tape to cover all of the guides on the masks to protect them from overpainting.

4. Finish model in required upper surface colour(s). Here we are using a Bristol Beaufigther finished in Night. Obviously, items such as propellers, exhausts, navigation lights and aerails are missing on these diagrams as they would normally be applied at the latest stages of completion.

5. A) Carefully remove the masking tape strips from the mask. Then remove the mask itself. Care should be exercised to enable the mask to be used again. Finish model as normal.

5